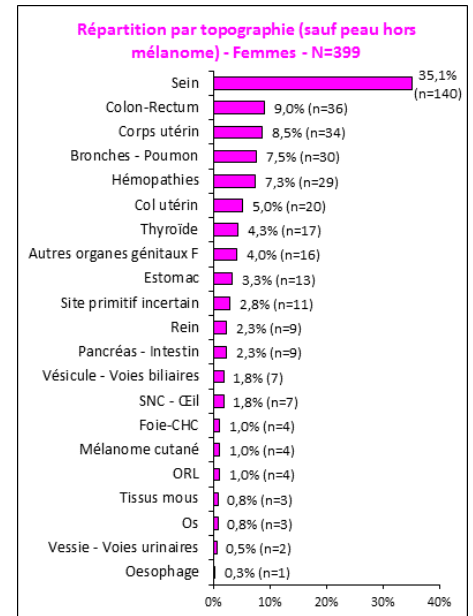
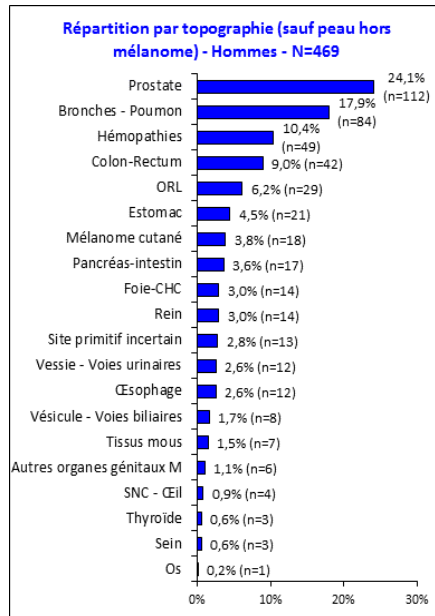
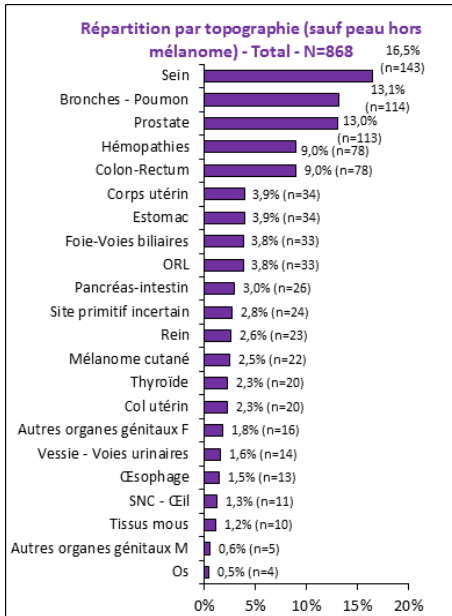


2014 - GENERALITES

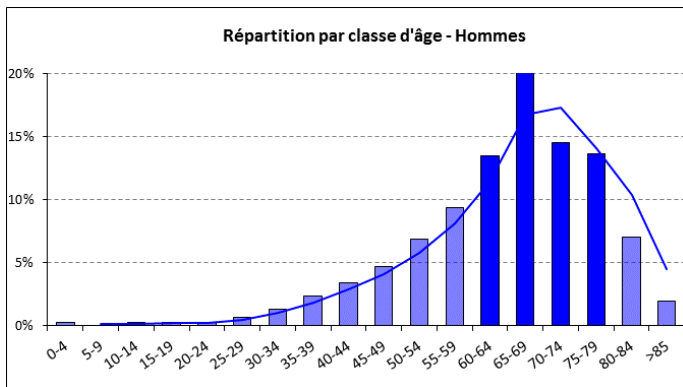


868 tumeurs primitives : 790 tumeurs solides (91%) + 78 hémopathies (9%)

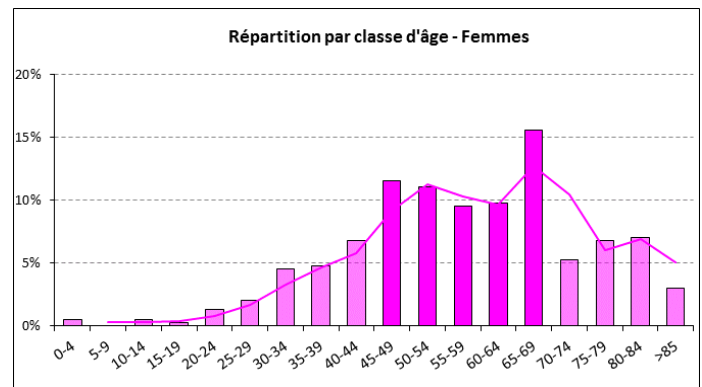
Répartition par site



Age au diagnostic

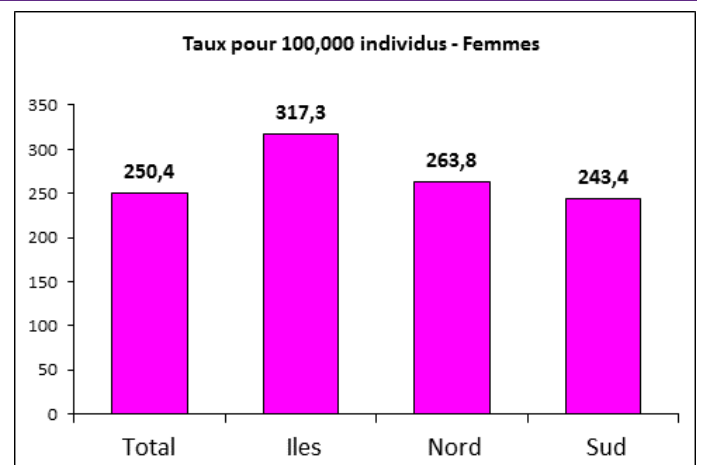
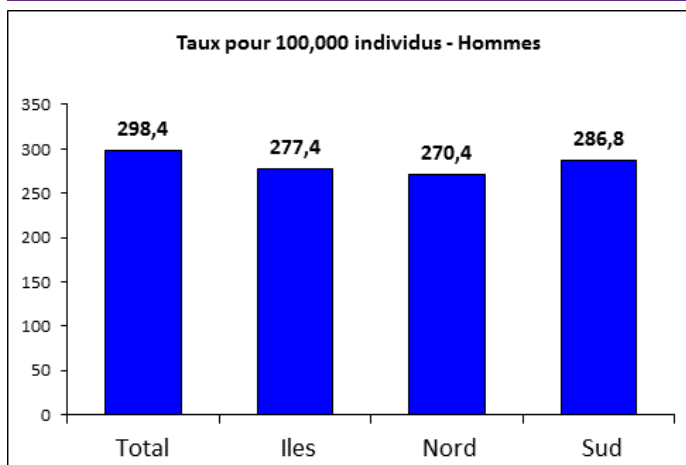


Age moyen : 64 ans - 62% des cancers entre 60-80 ans

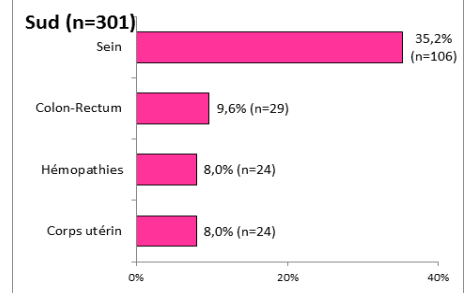
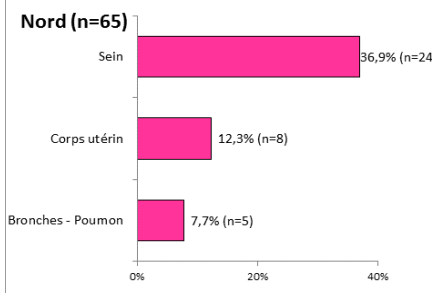
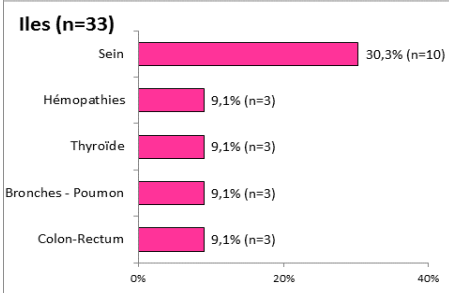
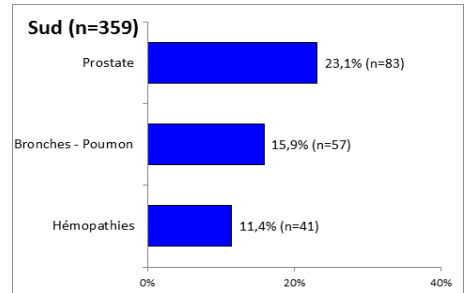
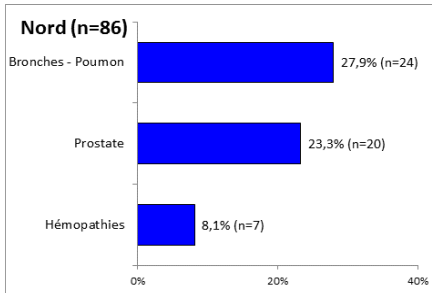
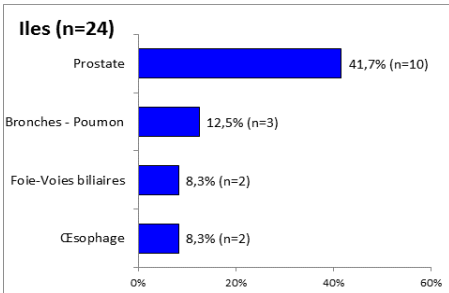


Age moyen : 57 ans - 57% des cancers entre 45-70 ans

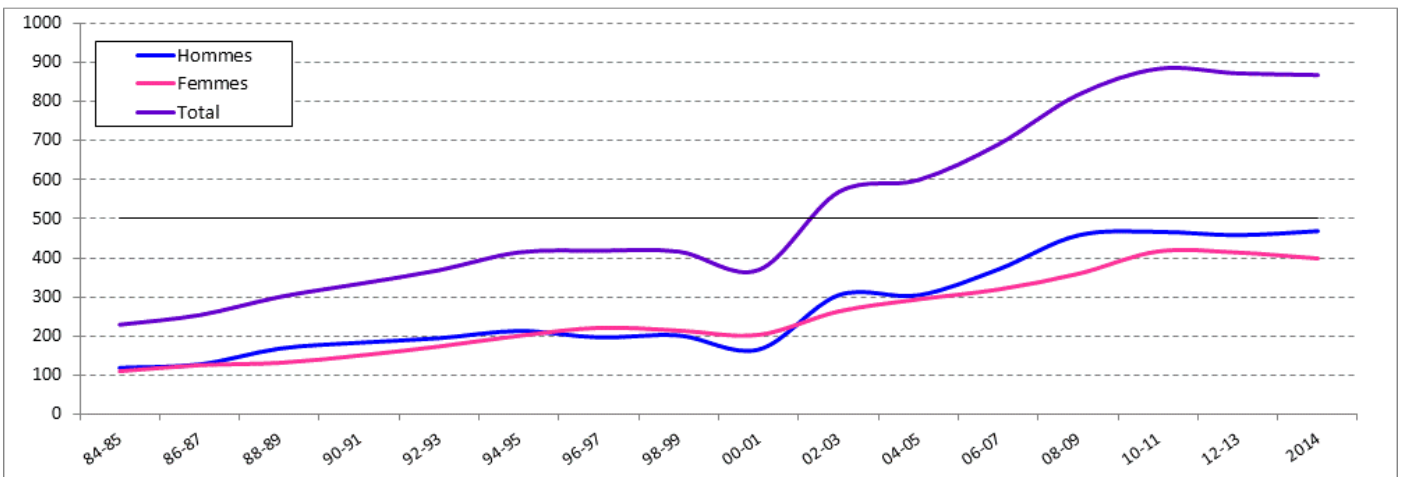
Incidence standardisée par province



Sites les plus fréquents par province

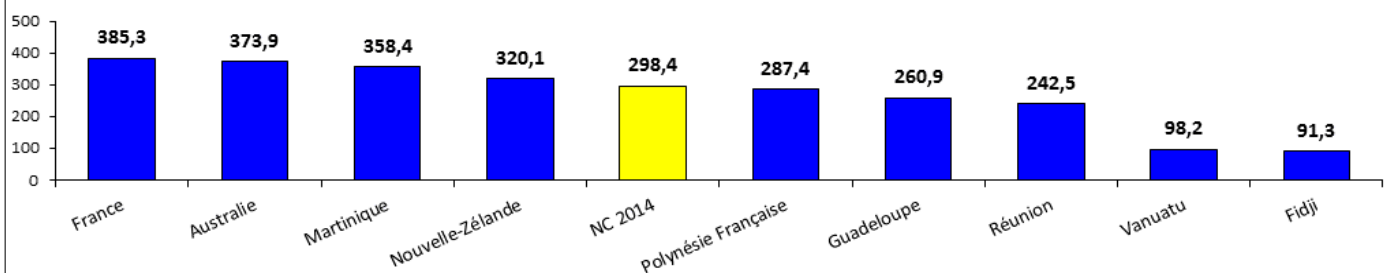


Nombre de cas moyen par période de 2 ans et par sexe



Comparaisons internationales

Comparaisons internationales (Globocan 2012) - Taux standardisés pour 100,000 Hommes



Comparaisons internationales (Globocan 2012) - Taux standardisés pour 100,000 Hommes

